

Life Safety Code Survey Process for Hospitals

Henry Kowalenko

Supervisor

Design Standards Unit

Rules and Regulations

- **The following rules and regulations are used when surveying a facility**
 - **Illinois Hospital Licensing Requirements**
77 IL Administrative Code 250
 - **Center for Medicare and Medicaid Services (CMS)**
CFR 485.623d Standard: Life Safety from Fire
NFPA 101 Life Safety Code (2000 Edition)
Chapter 19, Existing Healthcare Occupancies
National Fire Protection Association
 - **Illinois Plumbing Code**
225 ILCS 320 February , 2004
 - **Illinois Accessibility Code**
71 Illinois Administrative Code 400

Survey Process

- CMS Survey
 - Sample Validation Survey or Full Survey Due to Complaint
 - Unannounced
 - Clinical (nurses)
 - Life Safety Code (architects)
 - Survey all healthcare occupancies
 - Survey business occupancies
 - Billing under the hospitals provider number
 - Buildings can be onsite or offsite
 - NFPA 101- Chapter 39, “Existing Business Occupancies”

Survey Process

- The IDPH inspector will be escorted on a tour of the facility. The following items should be available:
 - Keys to all areas
 - Ladder
 - Flashlight
 - Small floor plan
 - Fire barriers and ratings
 - Suite designations
 - Exits

Survey Process

- The inspector will conduct a review of the following documentation:
 - Fire drill records
 - Fire alarm inspection
 - Emergency generator
 - Fire extinguishers
 - Kitchen hood suppression systems
 - Fire and emergency policy procedures

Survey Process

- During the inspection, the fire alarm and sprinkler systems will be tested.
 - Fire alarm testing will include
 - Pull stations – the facility will need to have keys available to reset the fire alarm
 - Smoke detectors - functional test (no magnets), canned smoke needs to be available
 - Sprinkler testing will include
 - Water flows (if sprinklered)

Plan of Correction - PoC

- Corrective action for each deficiency
 - Clearly identify what will be done
 - Don't say "completed"
 - When will it be complete – month/day/year
 - If the corrective action requires a number of steps, identify the steps and when they will be complete. Example:
 - Hire consultant.....month/day/year
 - Review solutions.....month/day/year
 - Bid work.....month/day/year
 - Start work.....month/day/year
 - Work complete,,,,,,,,,,,,,,,,,,,,,month/day/year

Plan of Correction-PoC

- Who will be responsible
 - Don't use proper names
 - Director of Facilities, etc,
- Must have reasonable time frame
- Interim Life Safety Measures (ILSM)
 - Additional fire drills
 - Additional fire extinguishers
 - Fire watch
- Use the forms provided
 - Essential

Plan of Correction-PoC

- LSC Monitoring Surveys
 - Onsite inspections to verify compliance
 - Based on the PoC
 - Unannounced
 - Surveys continue until PoC is complete

Alternate Compliance

- Fire Safety Evaluation System (FSES) – NFPA 101A (2001 Edition)
 - FSES may be used when prescriptive compliance cannot be achieved
 - The FSES is based on a point system
 - Not typically accepted for new construction

Licensure Surveys

- Plan review process completed
 - Receive a letter indicating reviews are done, submit certifications
- How do we know your done with construction?
 - Pre-occupancy Checklist
 - www.idph.state.il.us/healthcarefacilities/DSU/Pre-OccupancyChecklistComplete.pdf
 - 7-10 days review of certification
 - Certifications deemed complete
 - On-site survey scheduled - announced
 - Federally mandated surveys take precedence

Licensure Surveys

- On-site inspection process identical to CMS survey
 - The extent of survey will vary according to the scope of work
 - IDPH will issue a letter of deficiencies cited
 - Provider/architect to respond
 - Re-visit may be necessary

Licensure Survey

- Occupancy letter
 - Date of occupancy
 - Stipulations (if any)
- Emergency repair
 - IDPH notification
 - Plan/specification submittal
 - Full compliance with code

Licensure Survey

- Phased projects - temporary occupancy
 - 7-item request must be submitted and deemed acceptable
 - On-site inspection required
 - Systems must be in compliance (HVAC, sprinkler, electrical, etc)
 - Complete pre-occupancy checklist must be submitted for the final phase of a project
 - On-site inspection

Common Deficiencies



K014

Common Deficiencies



K017

Common Deficiencies



K-018

Common Deficiencies



K-038

Common Deficiencies



K-038

Common Deficiencies



K-039

Common Deficiencies



K-044

Common Deficiencies



K-051

Common Deficiencies



K-051

Common Deficiencies



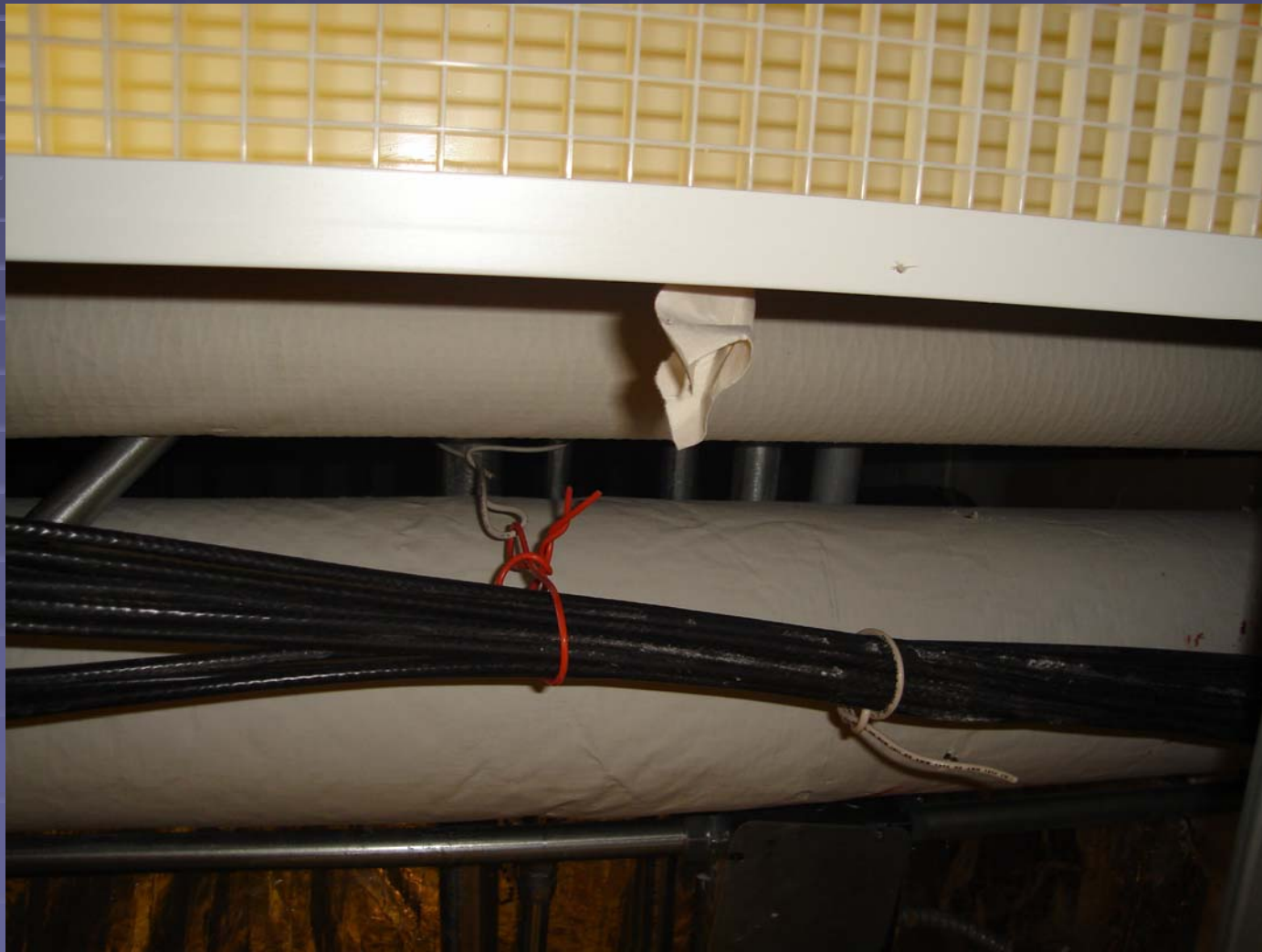
K-056

Common Deficiencies



K-0147

Common Deficiencies



K-147

Design Standards Unit

- Staff Engineers

- Justin Dammerman

Donald Hall

- Contact information

- Phone 217-785-4264

- Fax 217-782-0382

- Email (for general questions only)

- Design.standards@illinois.gov

Questions????

Questions????

Questions????

Questions????

???? Questions

Questions????

Question ?????

Questions????